



BSR002

0.4-2GHz Microwave Receiver

Applications

- EW Receiver Front Ends

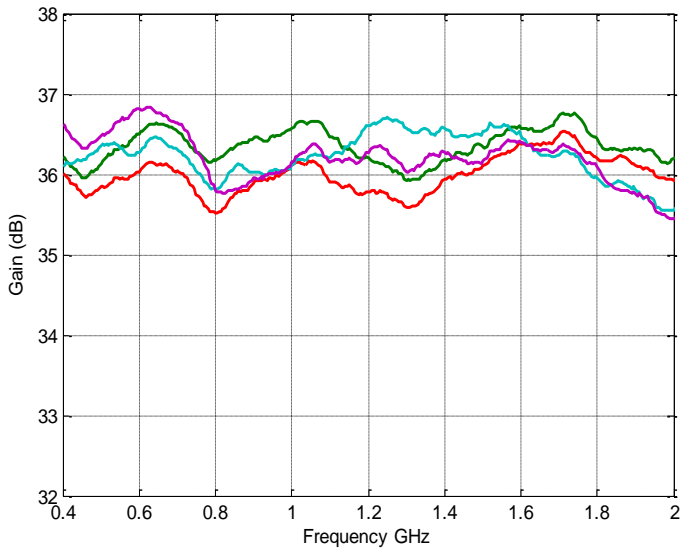
Key Features

- Wideband response from 0.4GHz to 2GHz
- Four separate super-heterodyne receiver paths
- Common LO path
- Compact size

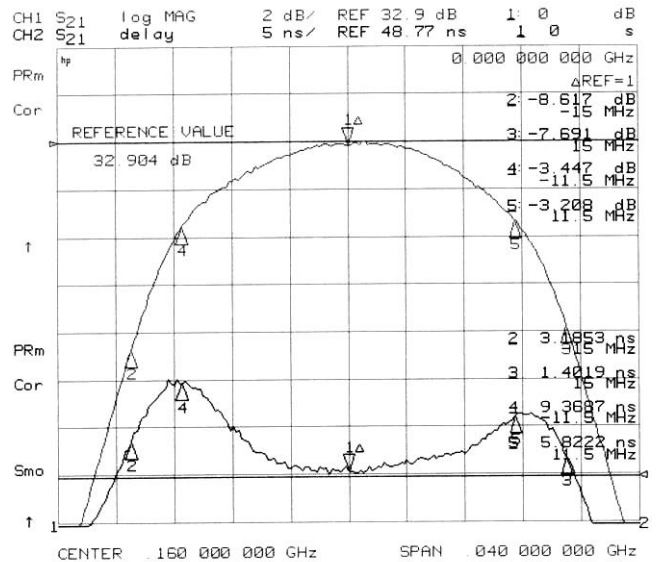
Specifications

RF Input Range:	0.4GHz-2GHz
Input & Output VSWR:	2:1 maximum
Super-Heterodyne Paths:	
Gain:	33dB-37dB
Gain tracking between channels:	±1dB maximum
Noise Figure:	7.5 dB maximum
P1dB:	+6.5dBm min.
Channel to Channel Isolation:	60dB minimum
IF Frequency:	160MHz
IF Rejection	
at 148.5 and 171.5MHz	2.5dB-3.5dB
at 130 and 190MHz	30dB minimum
DC-110MHz & 215MHz to 2GHz	65dB minimum
IF Filter Group Delay:	10ns maximum
IF Filter Type:	Gaussian to 6dB architecture
DC Supply:	10V, 1.1A maximum
Operating Temperature Range:	-54°C to +85°C
Operating Environment:	Uninhabited Fighter
Weight:	430grams maximum
Dimensions:	Per outline drawing

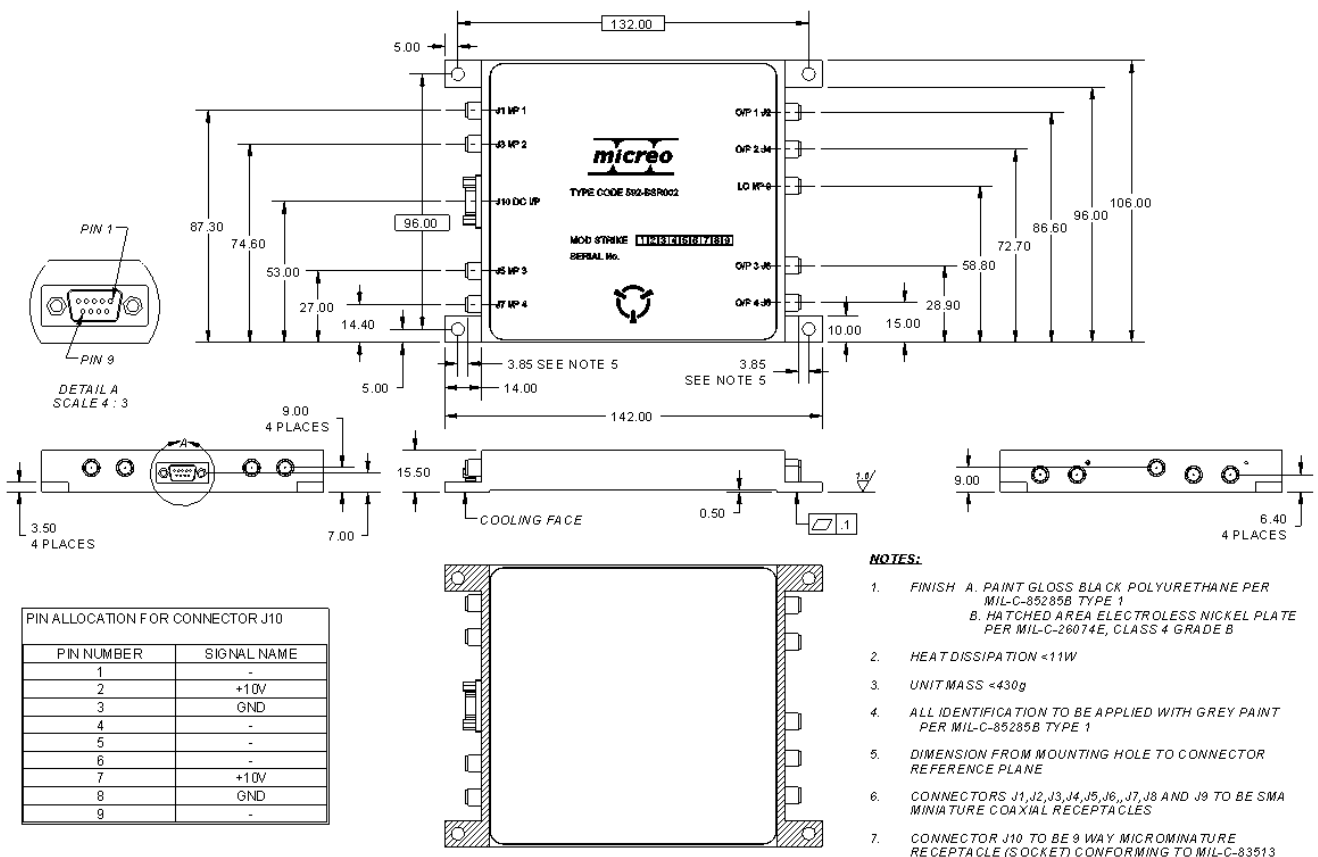




Typical Gain of Channels



Typical IF Amplifier / Filter Response



L3 Micreo
7 Hi-Tech Court,
Brisbane Technology Park,
Eight Mile Plains, QLD 4113
Australia

T: +61 7 3340 6200
F: +61 7 3340 6201
E: sales@micreo.com
www.micreo.com
ABN 11 098 350 479

Ordering information:

592-BSR002 Low Frequency Microwave Receiver Integrated Circuit

Please contact us for more information.

L3 Micreo reserves the right to amend specifications in the light of continuing development.
©2016 L3 Micreo Issue date: December 2016